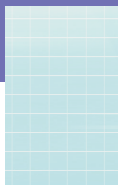
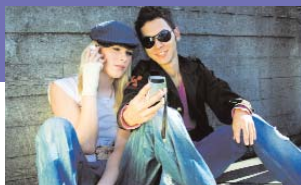


January 13 - 16, 2012
Las Vegas, USA
<http://www.icce.org>

IEEE CONSUMER ELECTRONICS SOCIETY

CALL FOR PAPERS



30TH INTERNATIONAL CONFERENCE ON CONSUMER ELECTRONICS 2012



IEEE



CO-LOCATED WITH THE INTERNATIONAL CONSUMER ELECTRONICS SHOW

ICongress Executive Committee

Conference Chair
Stefan Mozar
CQ University-Sydney
International Campus

Technical Program Chair
Reinhard Moeller
University of Wuppertal

Treasurer/CEA Liaison
Brian Markwalter
Consumer Electronics Association

Tutorials Chair
Michael Zeifman
Fraunhofer Center for Sustainable
Energy System
USA

Special Sessions Chair/
Co-Treasurer
Stuart Lipoff
IP Action Partners

Publicity Chair
Richard F. Doherty
Envisioneering

Vice-Chair Promotions
J.J. Lukkien
Eindhoven University of Technology

Digital Communications Chair
Nahun Gershon
The Mitre Corporation

Past Conference Chair
Peter Corcoran
National University of Ireland,
Galway

Senior Past Conference Chair
Aldo Morales
Penn State Harrisburg

Advisor
Uwe E. Kraus
University of Wuppertal

Transactions Liaison
Simon Sherratt
The University of Reading

Consumer Electronics Society
President
Stephen D. Dukes

Conference Coordinator
Charlotte Kobert

Conference Theme: Cloud Enhanced Consumer Electronics

The International Conference on Consumer Electronics (ICCE), now in its **30th** year, is soliciting technical papers for oral and poster presentation at ICCE 2012. **NEW:** This year authors have options on what type of paper they would like to submit. Please see the web-site for details. The ICCE is the leading Consumer Electronics Conference and has a long history with many of the world's leading researchers participating. Papers reporting new developments in all areas of consumer electronics are invited, including but not limited to those listed below. This year, papers relating to Cloud Enhanced Consumer Electronics Devices and Services are particularly welcome. Topics around this major theme will be content of special sessions and tutorials. ICCE 2012 will start and overlap with the final day of CES (Friday). The Friday program will feature our Conference Keynote and a Review of CES by a number of IEEE technical experts followed by a panel discussion. In addition a number of highly topical invited sessions will feature throughout the day on Friday. A discounted conference rate is available for Friday-only delegates. Keep an eye on our website for further details of the social and partner programs.

Additional Conference Sessions: ICCE has always prided itself on covering a broad spectrum of research activity relevant to Consumer Electronics. ICCE 2012 will incorporate 5 parallel conference tracks of Special, Invited and Associated Sessions allowing coverage of even more topics of current interest to the CE professional.

Tutorials: are scheduled during the Conference. Brief proposals should be submitted by June 1st, to the Tutorial Chair Dr Michael Zeifman. Proposals must include title, summary, detailed outline, as well as bio and contact information for the presenter.

Social Activities: in addition to a Welcome Reception on Friday evening and our conference lunches which include presentation of the Ibuka award, there will be organized a spectacular "magical" evening event for all participants.

INVITED SESSIONS

A number of Invited Sessions on topics of current interest to the CE community are being organized and technical papers on related topics are encouraged. Among the proposed topics for ICCE 2012 are:

- (i) CE Technology and the Cloud
- (ii) 3D Video Acquisition, Processing and Display
- (iii) Home & Personal Healthcare
- (iv) Green-Home, Intelligent White Goods, Energy-Management
- (v) Smart Grid
- (vi) Security & Digital Content, Intellectual Property & Licensing
- (vii) Gesture and Expression Recognition in CE Devices
- (viii) Automotive Technologies
- (ix) Advances and Challenges in HD Device Interconnects
- (x) Product Safety relating to Consumer Devices

Please check our website for a current list and status updates on these sessions. If you wish to organize or help with any of the above sessions or propose additional sessions please contact the conference chair or technical chair.

ASSOCIATED & SPECIAL SESSIONS

A selection of the best papers from ICCE are published each year in the IEEE Transactions on Consumer Electronics. Following a new tradition the IEEE Consumer Electronic Society arranges Associated Sessions related to their co-sponsored journals and related Societies. Full papers submitted to ICCE for these sessions will be published in the relevant journals subject to the normal peer review process and editorial discretion.

International Representatives

Australia-New Zealand

Stefan Mozar
CQ University- Sydney
International Campus

Canada

Pan Feng
ViXS Systems Inc.

Central & South America

Jorge Him
Gauss Systems

Central Europe

Dietmar Hepper
Thomson

China (PRC)

Xuanqin Mou
Xi'an Jiaotong University

East Asia

Tomohiro Hase
Ryukoku University

Eastern Europe

Konstantin Glassman
St. Petersburg University of Film
& Television

Hong Kong

KF Tsang, City University Hong Kong

Japan

Isao Kawahara
Matsushita Electric Industrial Co. Ltd.

Korea

Sung-Jea Ko
Korea University

Middle East

Mohammad S. Sharawi
King Fahd University of
Petroleum and Minerals

South Asia

Sankar Kousik
Hewlett-Packard, India

South East Asia

Nicholas Vun
Nanyang University of Technology

Taiwan

Tihao Chiang
National Chiao Tung University

United Kingdom

Simon Sherratt
Reading University

For further information or questions,
please visit www.icce.org or contact us at
icce@ieee.org

IEEE/OSA Journal on Display Technology

(i) 3D Display Technologies

(ii) Low Power / Energy-Efficient Displays

(iii) Emerging Display Technologies (micro-projectors, ebook displays)

IEEE Transactions on Haptics

(i) Enabling Technologies for Haptic CE Devices

(ii) Application of Haptics in CE Systems & Devices

IEEE Transactions on Affective Computing

(i) Enabling Technologies for Affective UI in CE Devices

(ii) Application of affective methods and workflows in CE Systems & Devices

IEEE Transactions on Computational Intelligence and AI in Games

(i) Gaming Devices Technology

(ii) Gaming Technologies usable for CE Devices, Systems and Services

IEEE Transactions on Autonomous Mental Development

(i) Real-time interaction, sensors and effectors in Brain-like CE Devices

Please note that unsolicited papers submitted to Invited or Associated Sessions must still follow the normal peer-review process. When submitting such papers please mark/ note that your paper is intended for a particular session but also include a second choice. If you have been solicited by a member of the ICCE TPC or Executive Committee to submit a paper please mark it explicitly as "invited".

Besides others a CEA supported Special Session on New Products & Technologies has been planned. Interested contributors are very welcome to get directly in contact with the Conference Chair or Technical Chair.

MAIN CONFERENCE SESSIONS – CORE TOPICS

HOME ENTERTAINMENT & SERVICES: Home Services in the Cloud, DTV, Home Theater, PVR, Interconnects, Product Safety, Interactive TV, Internet Integration, Home Robotics, Solid-State Memory & Optical Discs, 3D Displays, Multimedia Control, Interactive Control Including Gesture, Haptics and EEG Technologies, Gaming Technology, Intelligent White Goods

MOBILE COMPUTING & COMMUNICATION: Mobile Broadband, Next Generation Cellular, Handheld & Wearable Computers, AV Streaming to Mobile Devices, Communication with the Cloud, Personal Multimedia

AV TECHNOLOGY: Still & Video Cameras, Analog and Digital Audio, 3D Video, Recording, Storage, Compression, Transcoding, Applied Signal Processing, Content Indexing, Networked A / V, Video Enhancement, Visual Quality Assessment

RF & WIRELESS: Antennas, Acquisition, Equalization, Spectrum Usage, Software Radio, Wireless LAN, 802.11 Standards, Bluetooth, RFID, WPAN, UWB

NETWORK TECHNOLOGY & ENERGY MANAGEMENT: Wired & Wireless Multimedia, QoS, Security, Peer-to-Peer, Internet Appliances, Home Control, Bridges, Interoperability, Application Control, Home Healthcare Systems & Applications, Energy, Energy Management, Personal Area Networks, CE Applications of Sensor Networking

AUTOMOTIVE ENTERTAINMENT & INFORMATION: Navigation, A/V Systems, Assistive Technology, Networks & Communication, Sensors and Control, In-Car Entertainment,

SECURITY & RIGHTS MANAGEMENT: Copy and Redistribution Protection, Intellectual Property, Trusted Computing & Transactions, Biometrics, Encryption, Security, Parental Control, Privacy, Legal and Regulatory Issues, Standards

ENABLING TECHNOLOGY: Advanced Semiconductors, High Speed Signals & Interconnects, Algorithms, O/S, Development Tools, Test Equipment, Advanced Displays, Power and Conventional Batteries, Small Fuel Cells, Cost Reduction, Compliance Testing, Recyclable/Green Engineering, Human-Device Interface, Haptics & Gesture, Special-Needs/Assistive Technology

AUTHOR'S INFORMATION

**Deadline for Paper Submissions
July 31, 2011**

**Notification of Acceptance
September 06, 2011**

**Camera-Ready Paper Due
October 3, 2011**

Authors are invited to submit an extended abstract, as per guidelines provided on the website. Only electronic submissions will be accepted via the website at <http://www.icce.org>.

At least one author of each paper MUST pre-register for the conference by October 16, 2011 for papers to be included in the program.

IEEE International Conference on Consumer Electronics - ICCE Technical Program Committee

Sedig Agili
Penn State, Middletown, PA

Ezendu Ariwa
London Metropolitan University
London, United Kingdom

Wael Badawy
IntelliView Technologies Inc., Canada

Ed Barrett
USA

Atul Batra
Marvell Semiconductors, Inc.
Santa Clara, CA

E. B. (Erwin) Bellers
Trident Microsystems, Inc.
Santa Clara, CA

Amine Bermak
Hong Kong University of Science and
Technology
Kowloon, Hong Kong SAR

Petronel Bigioi
Tessera Technologies, Galway, Ireland

George Rome Borden IV
Logitech, Inc, Camas, WA

Yung-Chang Chen
National Tsing Hua University
Hsinchu, Taiwan

Tihao Chiang
National Chiao Tung University
Hsinchu, Taiwan

Tae-Sun Choi
Gwangju Institute of Science and
Technology, Gwangju, Korea

Thomas M. Coughlin
Coughlin Associates, Atascadero, CA

Yimin Dai
University of Science and
Technology of China (USTC)

Philip Dang
Intel Corp., Folsom, CA

Jayant Datta
Discrete Laboratories, Inc.
Syracuse, NY

Peter H. N. de With
CyclusMedia/Eindhoven University of
Technology
Waardenburg, The Netherlands

Carsten Dolar
Leibniz University of Hannover
Hannover, Germany

Peter Drotar
Soko_lany

Onno Eerenberg
Tridentmicro Europe BV
Eindhoven, The Netherlands

Lee Estrada
Toshiba, San Diego, CA

James O. Farmer
Enablence Technologies,
Alpharetta, GA

Wai-Chi (Winston) Fang
National Chiao Tung University
Taiwan, ROC

Bernard Fong
City University of Hong Kong
Kowloon, Hong Kong

Om Prakash Gangwal
Trident Microsystems (Europe) B.V.
AE Eindhoven, The Netherlands

Nahun Gershon
The MITRE Corporation, Mclean, VA

Konstantin Glasman
St.Petersburg State University of Film
and Television
St.Petersburg, Russian Federation

Paul Hall
Microsoft Xbox Hardware
Redmond, WA

Christian Hentschel
University of Technology Cottbus
Cottbus, Germany

Wei Hong
HP Labs, Palo Alto, CA

Adrian Hornsby
Nokia Research Center, Tampere, Finland

David Hostetler
DirecTV, Inc., California

Rong Hu
Logitech, Vancouver, WA

Alexander Huhn
HTW-Berlin University of Applied
Sciences, Berlin, Germany

David C. Hutchison
Texas Instruments, Plano, TX

Takuya Ima-ide
Hitachi Ltd., Yokohama, Japan

Michael A. Isnardi
SRI International Samoff, Princeton, NJ

Fumio Isshiki
Hitachi, Ltd.

Hari Kalva
Florida Atlantic University, Boca Raton, FL

Taechan Kim
Samsung Electronics, Gyeonggi-Do, Korea

Sung Wook Kim
Korea University, Seoul, Korea

Wen-Chung Kao
National Taiwan Normal University
Taipei, Taiwan

Brent Karley
Freescale Semiconductor, Austin, TX

Nasser Kehtranavaz
University of Texas, Dallas, Texas

Seon Wook Kim
Korea University

Ihor Kirenko
Philips Research Laboratories
The Netherlands

Sung-Jea Ko
Korea University, Seoul, Korea

Akiomi Kunisa
SANYO Electric Co., Ltd., Osaka, Japan

Yeong-Kang Lai
National Chung Hsing University
Taichung City, Taiwan, R.O.C.

Fredric Lindstrom
Limes Technology, Umea Sweden

Scott Linfoot
De Montfort University, Leicester, UK

Nam Ling
Santa Clara University, Santa Clara, CA

Sebastian Lopez
University of Las Palmas de Gran
Canaria, Spain

Wang-He Lou
Hightwise Center, Tustin, CA

William Lumpkins
Wi2Wi Inc., San Jose, CA

Vishal Markandey
Texas Instruments, Dallas, TX

Haruhiko Murata
SANYO Electric Co., Ltd., Osaka, Japan

Saurabh Mathur
Thomson Inc., Princeton, NJ

Dhawal B. Moghe
CableLabs, Louisville, CO

Dhawal B. Moghe
Alcatel-Lucent, Plano, TX

Dengpan Mou
Harman/Becker Automotive Systems
Karlsbad, Germany

Wolfgang Mueller
University of Education Weingarten
Weingarten, Germany

Adrian Nakonechny
Lviv Polytechnic National University
Lviv, Ukraine

Antonio Navarro
University of Aveiro, Portugal

Marina Nicolas
ST Microelectronics, Cedex, France

Anthony Ojo
NXP Semiconductors
Eindhoven, The Netherlands

Joonki Paik
Chung-Ang University, Seoul, Korea

Jose J. Pazos-Arias
University of Vigo, Vigo, Spain

Sharon Peng
Harman Consumer Group, Northridge, CA

Fernando Pescador
Polytechnic University of Madrid, Spain

Igor Radovanovic
Eindhoven University of Technology
Eindhoven, The Netherlands

Albrecht Rothermel
University of Ulm, Ulm, Germany

William A. Rowe
WARowe Consultancy, Inverness, IL

Masaru Sakurai
Nagoya Institute of Technology,
Nagoya, Japan

Kousik Sankar
NXP Semiconductors India Pvt Ltd.
Kasaba Hobli, India

Christian Schüldt
Limes Audio Döbelnsgata, Umeå, Sweden

Horst Schwetlick
HTW-Berlin University of Applied Sciences
Berlin, Germany

Ling Shao
The University of Sheffield, Sheffield, UK

Paul Snopko
Intersil Techwell, Palatine, IL

Mahsa Talebpourazad
University of British Columbia
Vancouver, BC Canada

Thanh Tran
Texas Instruments Inc, Stafford, Texas

Min-Jen Tsai
National Chiao Tung University, Taiwan

Peter van Beek
Sharp Laboratories of America, Camas, WA

Richard Verhoeven
Eindhoven University of Technology
Eindhoven, The Netherlands

Anthony Vetro
Mitsubishi Electric Research Labs
Cambridge, MA

Guido T.G. Volleberg
Philips Research Eindhoven, the Netherlands

Rod Walsh
Nokia Research Center, Tampere, Finland

Michael Wang
Macronix International Co., Ltd., Taiwan, ROC

Xianbin Wang
The University of Western Ontario
London, Ontario, Canada

Andreas Weber
University of Bonn, Bonn, Germany

Wolfgang Weltersbach
NXP Semiconductors, Hamburg, Germany

James Williamson
Sony Electronics, Inc., San Jose, CA

Tao Wu
Nokia, Burlington, MA

Hao Xin
University of Arizona

Jun Xin
Zenverge Inc., Cupertino, CA

Ning Xu
Dolby Labs

Chojuro Yamamitsu
Pioneer Corporation, Tokyo, Japan

Kei Yamashita
Hitachi, Ltd., Totsuka-ku, Japan

Yu Yuan
IBM Research - China, Beijing, China

Larry Zhang
ICERA, Richardson, TX